

Infrared Saunas

Installation/Instruction Manual



Dear users,

Please read this direction carefully before use and keep it cautiously for the future. The installation of the sauna requires a minimum of 2 people. You should not try to install the sauna on your own as damage will easily occur.

LIST OF CONTENTS

1、	INSTALLATION PROCEDURE -----	2
	FOR SQUARE STYLE -----	2
	FOR TOWEL RACK, CUP HOLDER, MAGAZINE HOLDER, AND OXYGEN IONIZER-----	8
2、	HOW TO USE INSTRUCTIONS -----	9
	CAUTION -----	9
	USE ENVIRONMENT -----	9
	CHARACTERISTICS -----	9
	OPERATION INSTRUCTIONS -----	10
	TROUBLESHOOTING -----	11
	MAINTENANCE -----	12
	WARRANTY -----	12
	SPECIFICATION -----	13
	WARRANTY CARD -----	14

1. INSTALLATION PROCEDURE

CAUTION:

- 1) No plumbing or plumbing fixtures should be placed in the sauna.
- 2) Keep all liquids away from the heating panels.
- 3) Install sauna on a completely level surface.
- 4) Install sauna in an area that is dry.
- 5) Flammable objects and Corrosive chemical substances should be kept far away from the sauna.

Each side panel has a white label to identify the side and direction. The panel with “LEFT” label should be placed on the left side *according to the sauna* (View from the inside of the sauna). The same goes with the other panels.

✂ Installation Steps

(The following pictures are used for your reference. If your sauna has some differences from the pictures, please just follow the steps.)

- 1) **Open sauna packages in a large area. Place Floor Panel on the desired location.**



- 2) **Locate Back Panel on the Floor panel vertically and tightly.**



3) Locate the left Wall on the Floor panel in the same way.



4) Locate Sitting baffle between the two slips of left and back wall and connect

the terminals. Locate Bench Board then.



5) Locate front side panel please. Slide it down vertically between the left wall and the back wall.



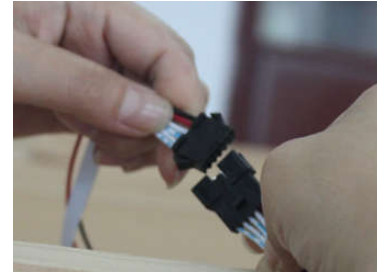
6) Locate right side panel in the same way.



7) Raise Internal Top ceiling above the Panels, while pull the wires of front and back panel out through the hole in the ceiling.



8) Connect the wires on the top. Please refer to the pictures below (3 steps).



9) Raise External Top Cover above the sauna. Pull the power wire out through the cover hole and fix the cover by a screw.

Whole sauna:



The installation is completed!

✂ For Towel rack, cup holder, magazine holder, and oxygen ionizer installation

Although there are small pre-drilled holes for the placement of these items, the towel rack, magazine holder, and cup holder can be placed wherever you prefer as long as you do not damage the wood. If installing in a different location, it would be a good idea to pre-drill the holes before you tighten the screws. The oxygen ionizer should be installed in the upper left of the back panel, where there is a small wire that should be fed from the top panel.

Oxygen Ionizer



Speaker



Color Light



Cup Holder



Towel rack



Magazine Holder



2. HOW TO USE INSTRUCTIONS

1) CAUTION

- 1) Check all the circuitry and the plug connections carefully.
- 2) Install a voltage regulator if the power is unsuitable.
- 3) Do not share the outlet with other electrical appliances to avoid danger.
- 4) Do not use the sauna room if under the influence of alcohol, drugs or medications.

- 5) Pregnant women or persons with poor health should consult their physicians before use.
- 6) Minors should be supervised in order to prevent injury.
- 7) Allow up to 30 minutes heat up time.
- 8) Do not use the room for drying clothes, bathing suits, etc.
- 9) Do not put animals in the room.
- 10) After 2 hours of continuous use, shut the sauna down for one hour.

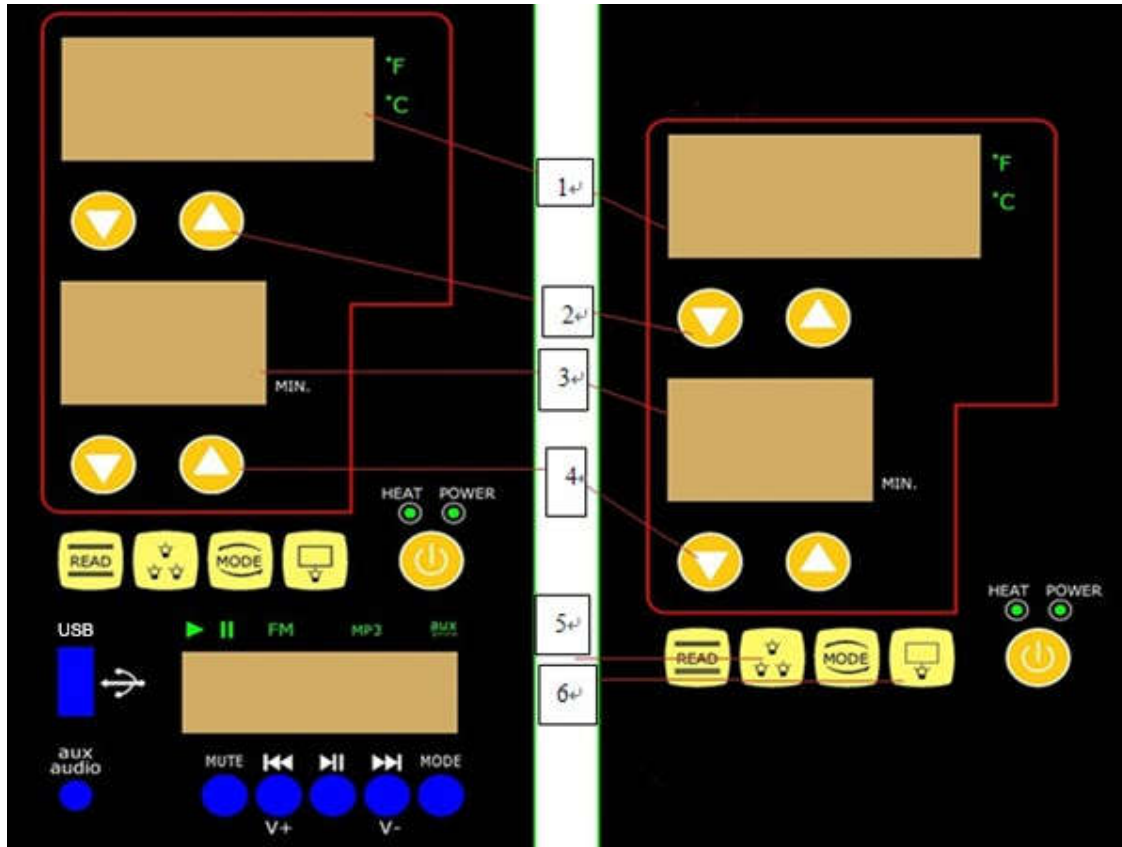
2) USE ENVIRONMENT

- 1) Temperature: 5~40°C;
- 2) Comparative humidity: $\leq 85\%$;
- 3) Atmospheric pressure: 700hpa~1060hpa;
- 4) Power: AC 220V \pm 22V, 50HZ \pm 1HZ.

3) CHARACTERISTICS

- (1) Wooden frame;
- (2) Electronic controls and constant temperature automatically;
- (3) Imported high-precise numerical transporter;
- (4) Electronic keying;
- (5) Far-infrared radiate heaters;

4) OPERATION INSTRUCTIONS



Number	Function	Number	Function
1	Temperature Display	4	Time Control
2	Temperature Control	5	Color light control
3	Time Display	6	Exterior Light control

1. **Connect the power:** The power display is on and the sauna is ready to work.
2. **Turn on:** Press the **POWER**, the **HEAT** light is on. The temperature displays the actual interior temperature of the sauna.
3. **Temperature Display:** Press arrow **UP** or **DOWN** to set desired temperature. Press the two arrows together to convert Celsius into Fahrenheit.
4. **Time Display:** Press arrow **UP** or **DOWN** to set desired session time (Sauna heaters will turn off when time has reached 0).
5. **Alarm System:** If “-----” appears in the time display, it means the sensor is not installed or it went wrong. Then the sauna stops to work.
6. **Reading light:** Press the button **READ** to turn on/off the reading light.
7. **The Color light control:** Press the color light, the color of the light changes.
8. **The Mode control:** Press the **MODE** to let the color of the light change automatically or not.

9. **Exterior Light control:** Press the exterior light control to turn on/off the exterior light.
10. **Turn off:** Press the **POWER**, the sauna stops working.

5) TROUBLESHOOTING

I. The light bulb is out of order

	Possibility	Repairing Method
1	The bulb fuse is burned up.	Change a bulb.
2	The bulb and the socket are not connected well.	Pull out the bulb and check the socket, change the socket if necessary. Then plug it
3	The fuse is burned up.	Change a fuse. On the top of ceiling.

II. The control panel is out of order

	Possibility	Repairing Method
1	The cable of control panel is not connected well.	Check the cable connection and fix it properly.
2	The fuse is burned up.	Change a fuse. On the top of ceiling
3	The indicator light of power is on, but no led display	Most likely will need a new control panel

III. The far infrared heaters are out of order

Phenomenon	Possibility	Repairing Method
1 One of heaters cannot heat.	1) The heater is not connected properly	Check connection
	2) The heater needs replacement	Replace heater

2 All heaters cannot heat.	1) The power plug is not connected properly	Check power plug
	2) The heaters are not properly connected	Fix the connections
	3) Relay malfunction	Change relay
	4) Control panel malfunction	Change control panel

6) MAINTENANCE

- I. The sauna room should be kept clean and odor free.
 - II. Damp towels should always be used on benches otherwise perspiration penetrates the soft wood.
 - III. Air out the room often by keeping the door and vents open when the room is not in use.
 - IV. Saunas that are in daily use should be washed down at least once a week to keep them clean and the air fresh.
 - V. Inspect benches regularly for required maintenance.
 - VI. To clean and remove perspiration stains, use soap or detergent in warm water, best applied with a scrub brush
 - VII. Badly soiled surfaces may require sanding Sand paper wrapped around a wooden block works well.
- I. Any damages sustained to sauna set during transportation are not covered by this warranty. Claims for damage must be filed through transport/shipping Company. Any damage must be reported on the Bill of Lading through transport shipping company.
 - II. You're welcomed to give us suggestions.

DISCLAIMER

Our Saunas and its associates do not provide medical guidance. Consult a doctor for medical advice. All of the information contained in this manual is for information purposes only. We reserve the right to change, without notice, anything contained within the manual. Our Saunas shall not be held responsible for printing variations. Color variations may occur. Some models are shown with optional features.

7) SPECIFICATIONS

Type	Capacity (Person)	Size (L×W×H mm)
------	-------------------	-----------------

Square Style	ZS1	One Person	900×950×1900
	ZS2	Two Person	1200×1050×1900
	ZS3	Three Person	1500×1150×1900
Corner Style	ZS3C	Four or Five Person	1550×1550×1900